

AOS01 + SHIELD

ANCHOR POINT FOR TRAPEZOIDAL METAL ROOFS

UNOBTRUSIVE

It ensures a reduced visual impact thanks to its small size.

PACKAGING

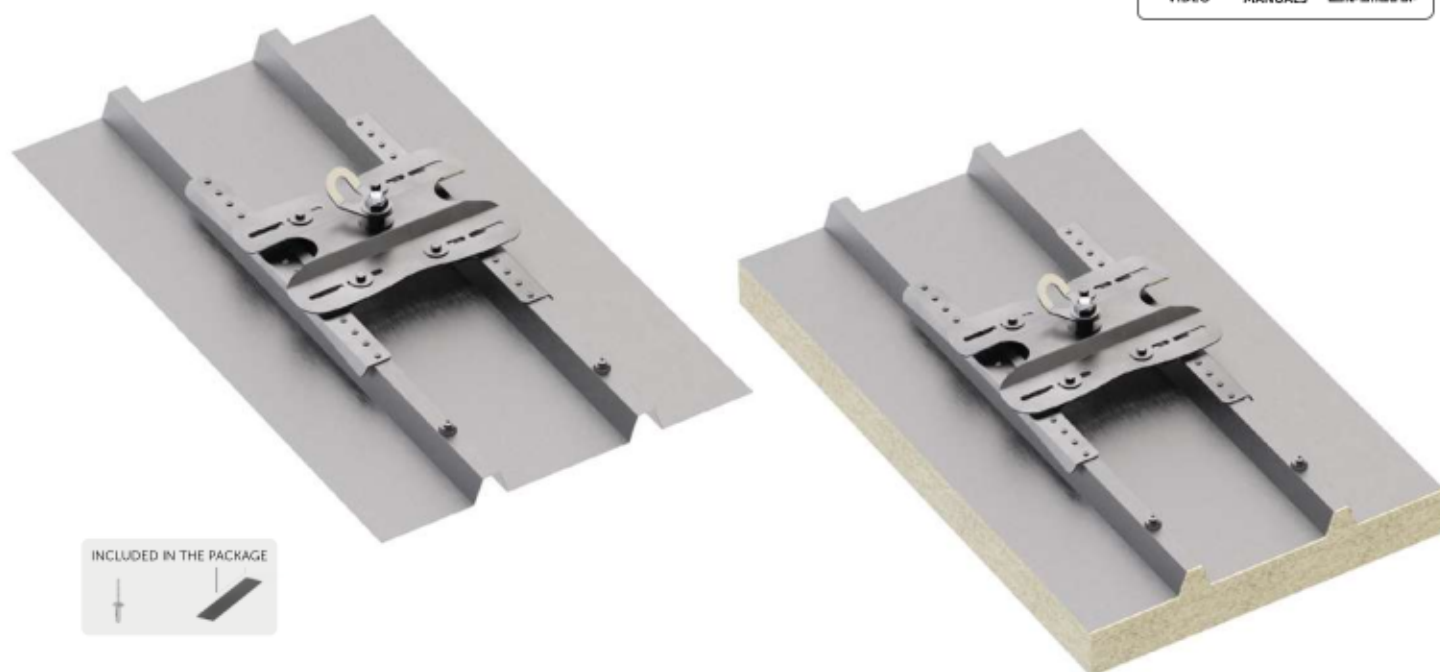
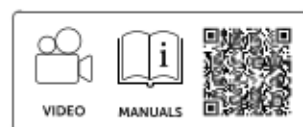
Supplied complete with mounting rivets and cellular rubber seals for perfect waterproofing.



LOAD DIRECTION






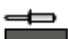


TYPES OF APPLICATION



INCLUDED IN THE PACKAGE



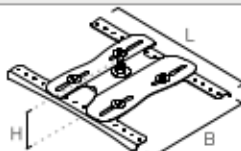

TECHNICAL DATA*

substructure	minimum thickness	fastening systems included	substructure	minimum thickness	fastening systems included
 Fe	0,4 mm	rivet 6,3 x 20,2 mm with EPDM washer (x 32) 	 Al	0,6 mm	rivet 6,3 x 20,2 mm with EPDM washer (x 32) 
 Fe	0,4 mm		 Al	0,6 mm	

* The values indicated are the result of experimental tests carried out under the supervision of third parties in accordance with the standard referred to. For a calculation report with minimum distances according to the relevant standard requirements, the substructure must be checked by a qualified engineer before installation.

SHIELD | CODES AND DIMENSIONS

A2
AISI 304

CODE	material	B [mm]	H [mm]	L [mm]	pcs	
SHIELD	AISI 304 stainless steel grade 1.4301	180-420	85	476	1	
AOS01	AISI 304 stainless steel grade 1.4301	60	-	98	1	
RIV6320	rivets 6,3 x 20,2 mm with EPDM washer	-	-	-	33	

AOS01 + SHIELD 2

ANCHOR POINT FOR TRAPEZOIDAL METAL ROOFS

FAST

Easy installation because it is configured as a single plate.

COMPLETE

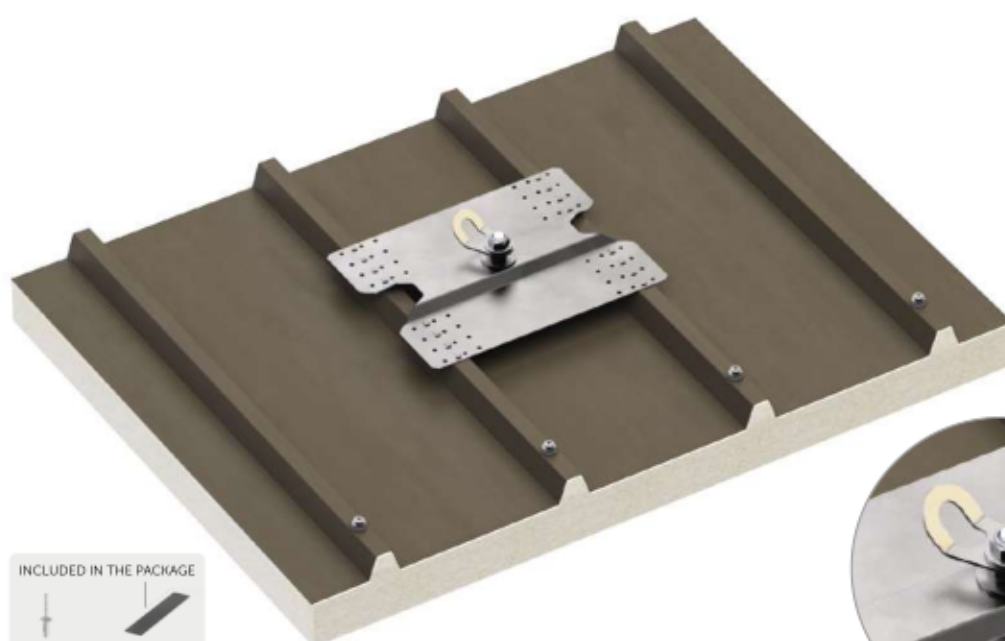
The package includes fasteners and cellular rubber seals, to ensure water-proofing.



LOAD DIRECTION



TYPES OF APPLICATION



INCLUDED IN THE PACKAGE



TECHNICAL DATA*

substructure	minimum thickness	fastening systems included
Fe	0,5 mm	rivet 6,3 x 20,2 mm with EPDM washer (x 16)
Al	0,5 mm	

substructure	minimum thickness	fastening systems included
Fe	1 mm	rivet 6,3 x 20,2 mm with EPDM washer (x 16)
Al	0,7 mm	

* The values indicated are the result of experimental tests carried out under the supervision of third parties in accordance with the standard referred to. For a calculation report with minimum distances according to the relevant standard requirements, the substructure must be checked by a qualified engineer before installation.

SHIELD 2 | CODES AND DIMENSIONS

A2
AISI 304

CODE	material	B [mm]	H [mm]	L [mm]	pcs	
SHIELD2	AISI 304 stainless steel grade 1.4301	420	65	322	1	
AOS01	AISI 304 stainless steel grade 1.4301	60	-	98	1	
RIV6320	rivets 6,3 x 20,2 mm with EPDM washer	-	-	-	33	